

Nyheter i FME 2026

2026-03-05



Introducing a Quarterly Release Cadence

Starting in 2026, FME will move to a quarterly release model, giving you faster access to improvements on a reliable schedule.

- Four releases per year — March (.1), June (.2), September (.3), December (.4).
- Simple, time-based versioning: YYYY.Release.Update (e.g., 2026.2.1).
- Every release treated equally: No large “.0” releases—each quarterly update is production-ready.

Freedom **M**ade **E**asy



No-Code



Run Anywhere



All Data



Any AI



All Users

The Power of Choice



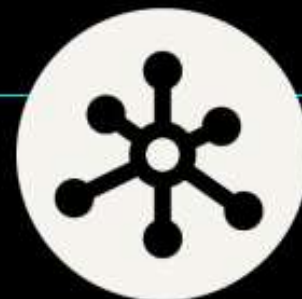
Choice of Data

Connect to anything. From legacy databases to modern cloud lakes.



Choice of AI

Swap one AI for another anytime. Your workflows can stay the same.



Choice of Infrastructure

On-Prem, Cloud, Containers, Hybrid, Edge, Air Gapped. We run where you want.

Complexity is our Enemy

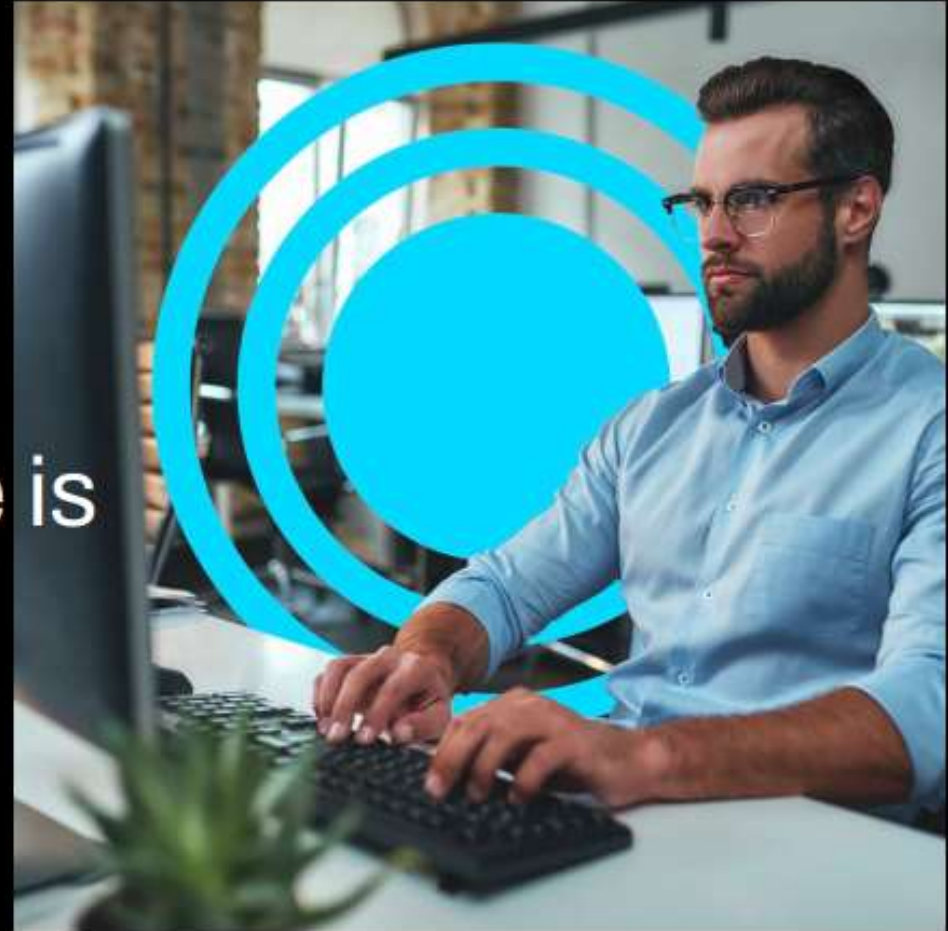
Everywhere

FME is powerful but must be simple to use or adoption stalls.



What if Workbench Understood What I Meant?

The quiet, wishful thinking
moment when you type a
sentence and the workspace is
built for you...



Vibe Coding: Elevating FME Workspace Creation

AI-Powered Workspace Generation

Simply tell FME what you want, and AI will build it.



Simple Language, Clear Intent: Use natural language to design and propose new data flows.



Intelligent Drafting: AI determines the path from your request to a valid FME workspace.



“**Vibe Coding**” enhances AI Assist by giving users an AI-Powered starting point. Integrating “vibe programming” into Workbench’s no-code environment (perhaps, “no-code vibing”?) will become more powerful as the underlying AI improves.



Demo



Workspace och
Transformers definierade i
JSON

- nya möjligheter för versionshantering
och generering

“

Ta Python-kod och be AI
skapa ett workspace
istället

Orchestrated Intelligence

Data Access is Everything.

AI Models are brilliant. They can do many things, but they need data.

FME is the connective tissue. We deliver the needed data to AI

FME + AI = Orchestrated Intelligence.



The Gift: Model Context Protocol (MCP)



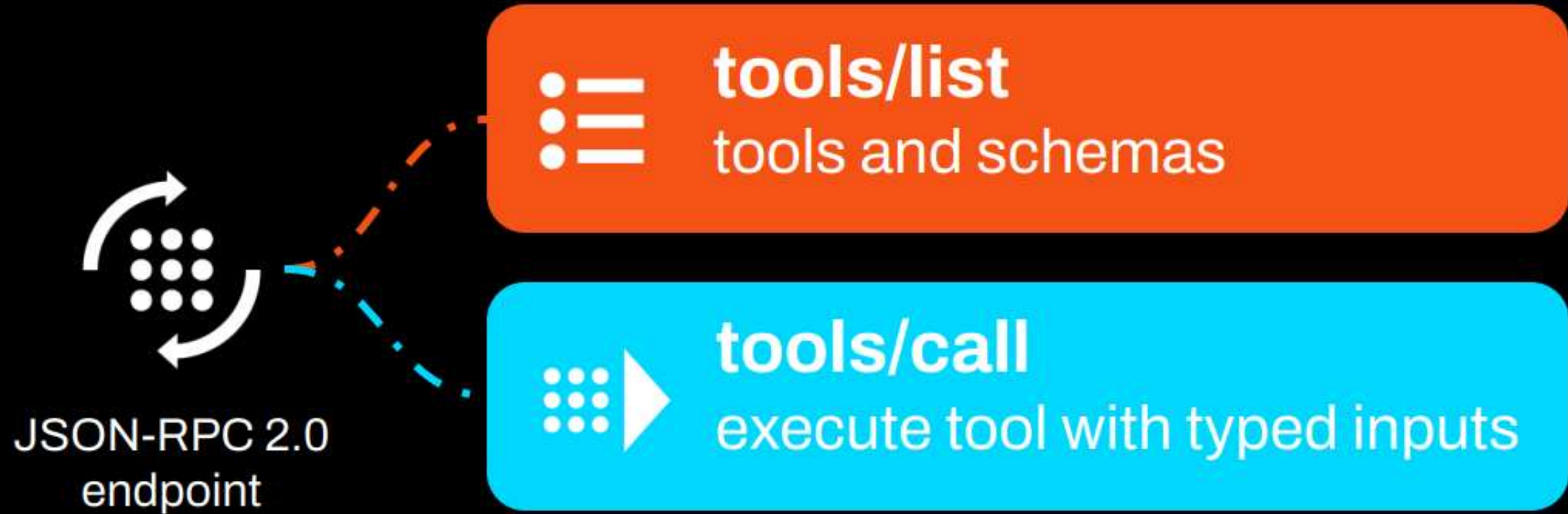
An open standard that lets tools and services stay in sync and work together by sharing context in a consistent way.



A simple API. That is it.

A once-in-a-generation shift.

MCP allows any client to



It is designed for clarity, speed, and composability.

MCP Delivers Two Things



1. **Expanded FME Reach:** Brings the world of AI to FME.

* If there is an MCP interface then FME can use it!



2. **Expanded AI Reach:** Brings the world of FME to AI.

* Every system and workflow can be shared through MCP to be used by any AI.

FME Flow as MCP Server

FME is the Enterprise Backbone

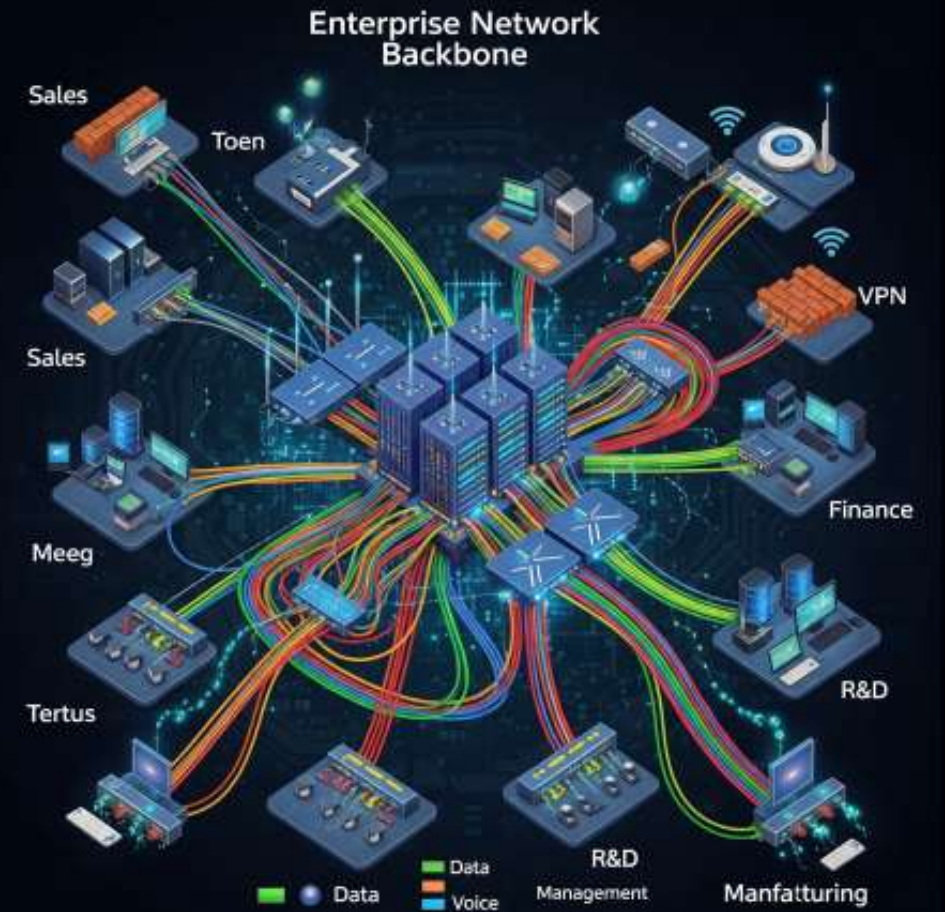
A single FME Flow will host multiple MCP servers.

Easily Turn any workspace into an MCP Tool.

This will allow organizations to share all their data and logic with any AI agent safely and securely.

Think: Entire FME ecosystem of formats, DBs, and workspaces!!!

Many systems supported by FME will never have an MCP Interface.



One FME Flow Instance -> Unlimited AI Tools

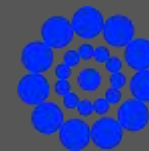


Demo



”Vilka fastigheter har bygggrätter kvar enligt detaljplan?”

MCP – sänder tillbaka svaret till användare



FME Flow kör ett workspace som läser data och gör analysen

MCP – översätter frågan till ett anrop till FME Flow



Är det bara AI
som gäller nu?

Nya format



PMTiles

Arkivformat i en enda fil för lagring av Mapbox Vector Tiles (MVT), utformat för att fungera effektivt med molnlagring och webben.



Heltäckande analysplattform som samlar dataintegration, datalagring, dataanalys och affärsintelligens i en gemensam molnbaserad lösning.



Hierarchical Data Format 5
(HDF5 Raster) Reader

Lagra och organisera stora mängder numeriska data på ett effektivt sätt.



Esri Geodatabase (OpenFile Geodb)

Ersättare till den pensionerade Esri Geodatabase (File Geodb Open API) reader/writer. Läs/skriv Esri Filgeodatabaser utan ESRI-licens

New CityGML3 Reader / Writer

Phase 1: CityGML Core - 2026.1

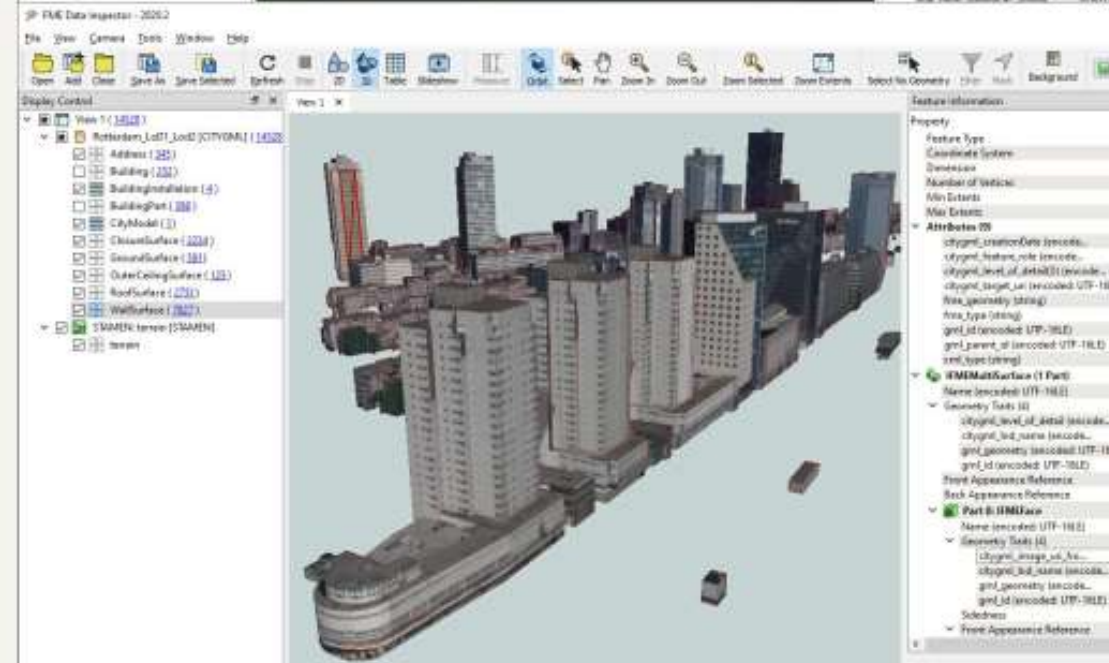
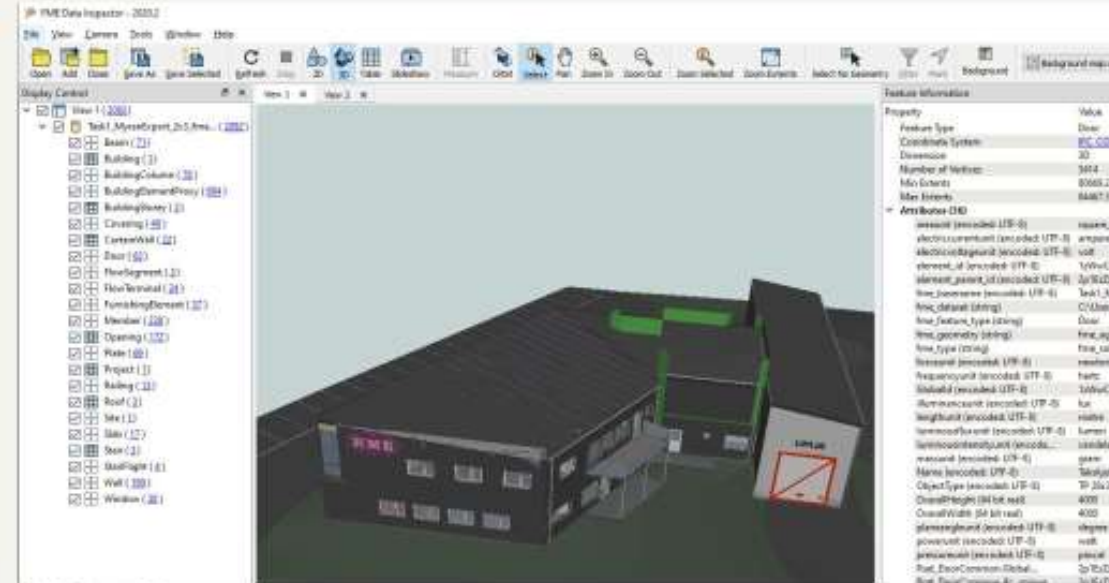
- Core object and geometry model

Phase 2: Support all v2 equivalents - 2026.2

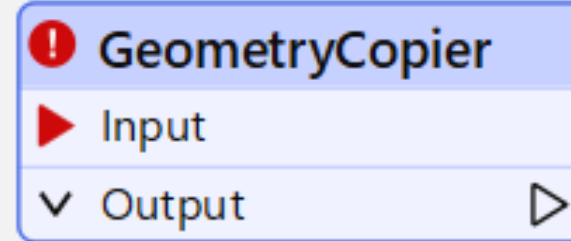
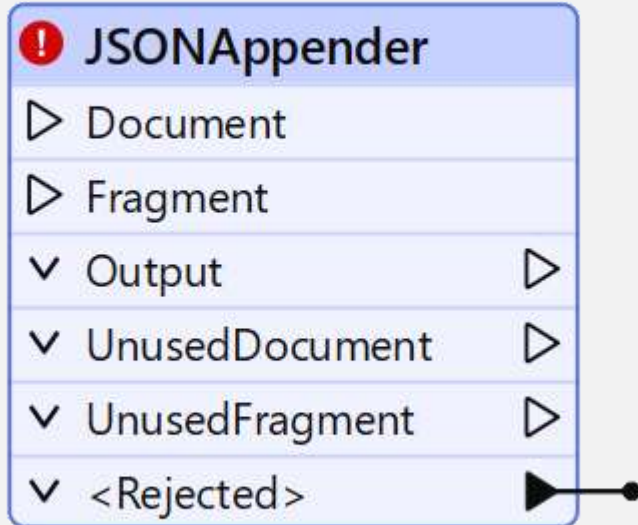
- Textures, Appearances



Phase 3: New in Version 3 - 2027.1 - depending on demand

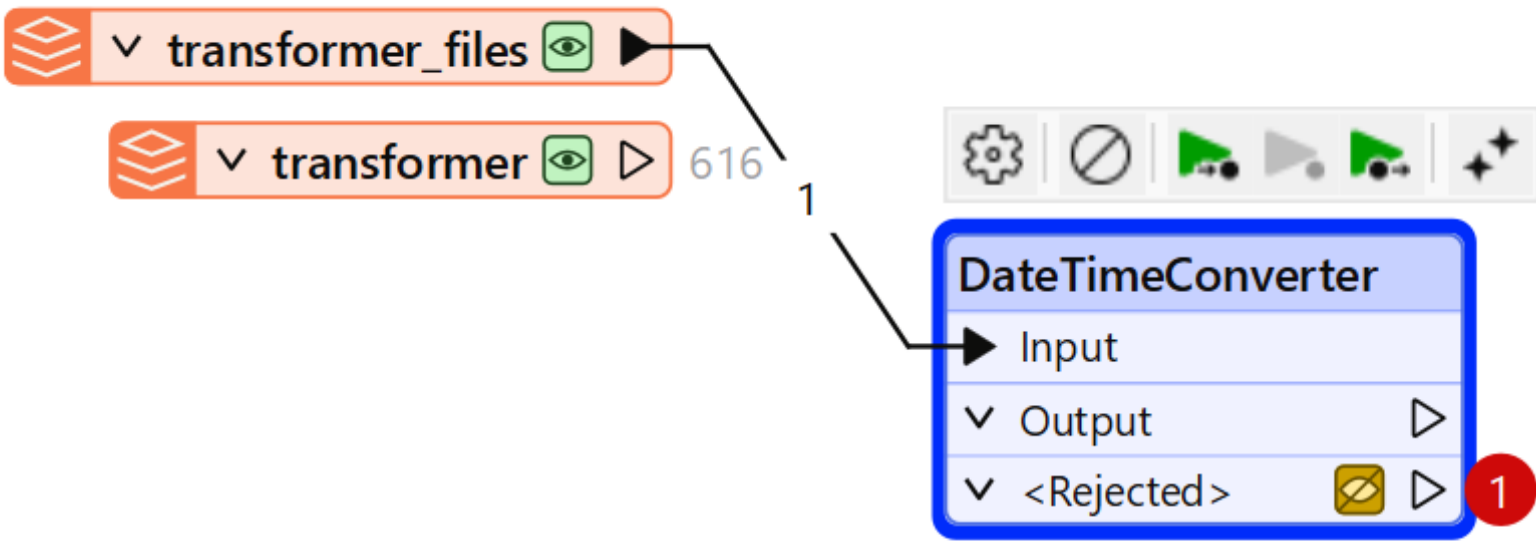
- Dynamizer** - links to events, real time - digital twin support
- Versioning
- Point clouds



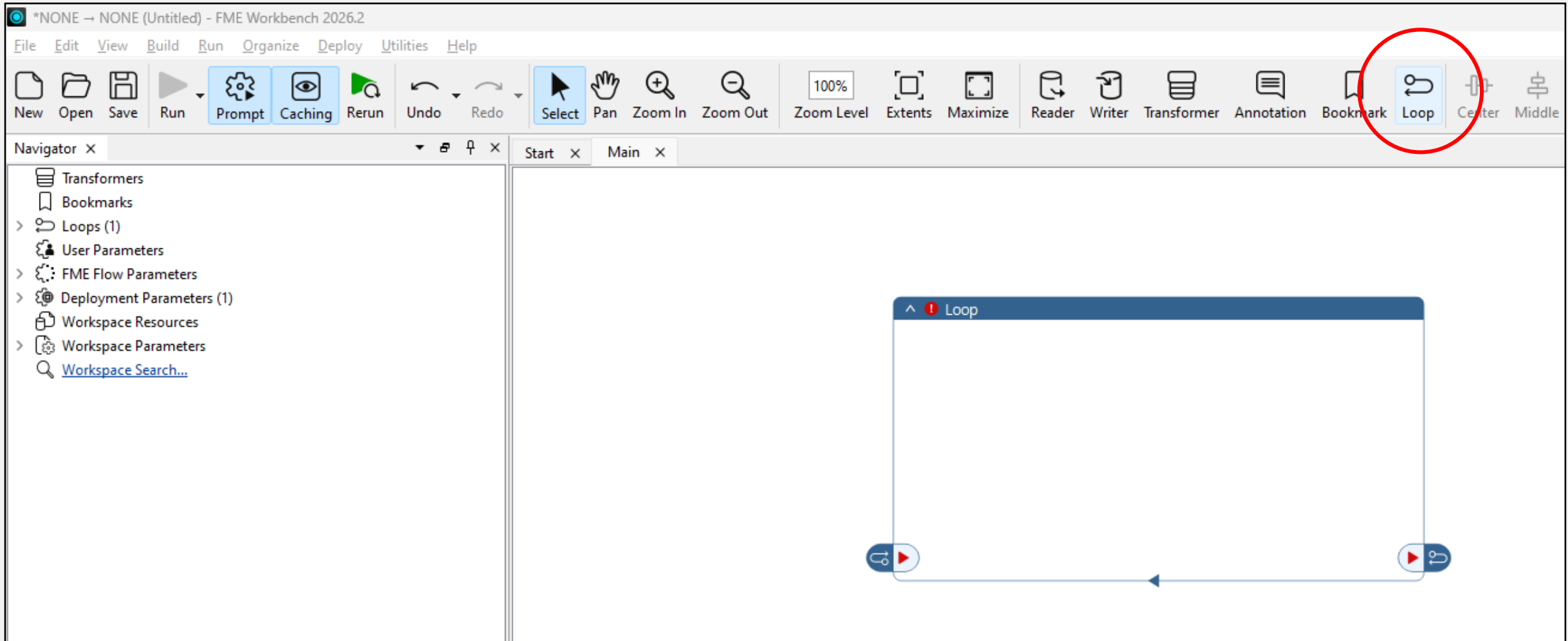
Nya transformers (2026.1)



Translation failed. Incomplete caches are preserved.
By default, incomplete caches will regenerate (marked as stale ) To use incomplete caches (mark as up-to-date ) , change setting under Run.



Enklare looping (2026.2)



FILE → FME (C:\Users\sehan\OneDrive - sweco AB\OneDrive\FME_data\FME_native_looping_test.fmw) - FME WORKBENCH 4.20.2

File Edit View Build Run Organize Deploy Utilities Help

New Open Save Run Rerun Run From Run This Run To Run Between Caching Prompt Undo Redo Select Pan Zoom In Zoom Out Zoom Level Extents Maximize Reader Writer Transformer Annotation Bookmark Loop Center Middle FME Flow Connection Publish Republish hansh

Navigator x Start x Main x GraphQLtoJSON x

- Transformers (22)
- Disabled Transformers (1)
- Upgradeable Transformers (13)
- Bookmarks (3)
- Loops (1)
- User Parameters
- FME Flow Parameters
- Deployment Parameters (2)
- Web Connections (1)
- DAF GraphQL API Key v1
- Workspace Resources
- Workspace Parameters
- Search Results

Transformer Gallery x

- All (485)
- Categorized
- Embedded Transformers (1)
- FME Hub
- Recent (10)
- Search Results

Translation Log x Edit History

0 Errors 66 Warnings Information

The screenshot displays the FME Workbench interface with a workflow diagram. The workflow starts with an 'Input' transformer, followed by a 'Loop' containing several transformers: 'StringReplacer', 'GraphQLtoJSON_2', 'HTTPCaller_4', 'JSONFragmenter_2', 'Tester_8', 'AttributeCreator_11', and 'StringReplacer_5'. A yellow callout box points to the 'GraphQLtoJSON_2' transformer with the text 'Fetch subsequent pages of query results'. Two red callout boxes point to 'AttributeCreator_11' and 'Tester_8' with the text 'no error logging'. The workflow continues to 'JSONFragmenter_5' and 'AttributeRemover' transformers. A status box indicates 'Loop Contents: Transformers: 8' and 'Iteration: 2'. The bottom status bar shows '0 Errors' and '66 Warnings'.



Everything is included!



No extra costs for functionality